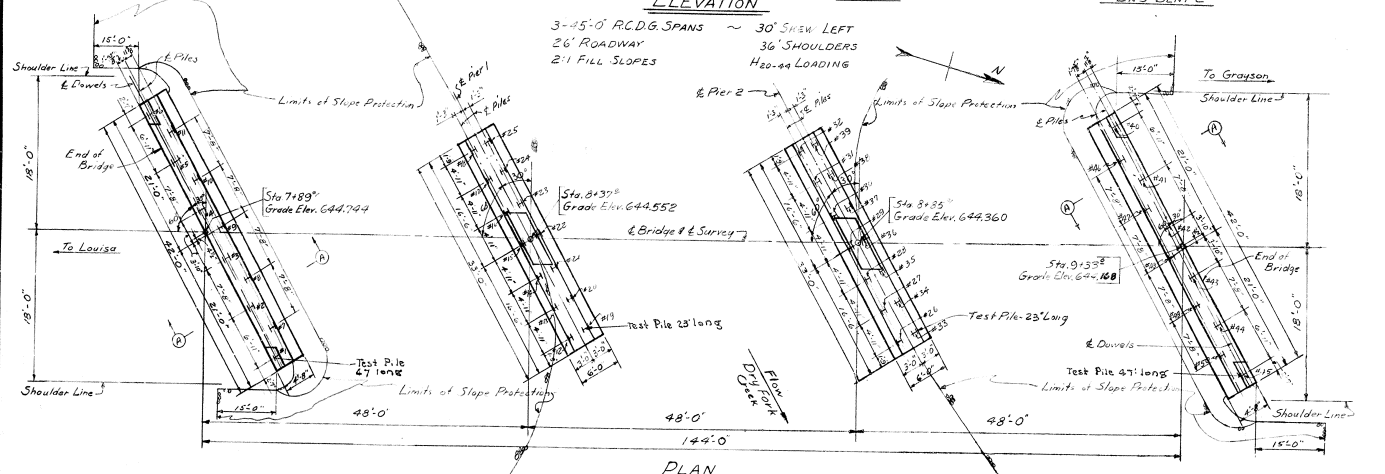
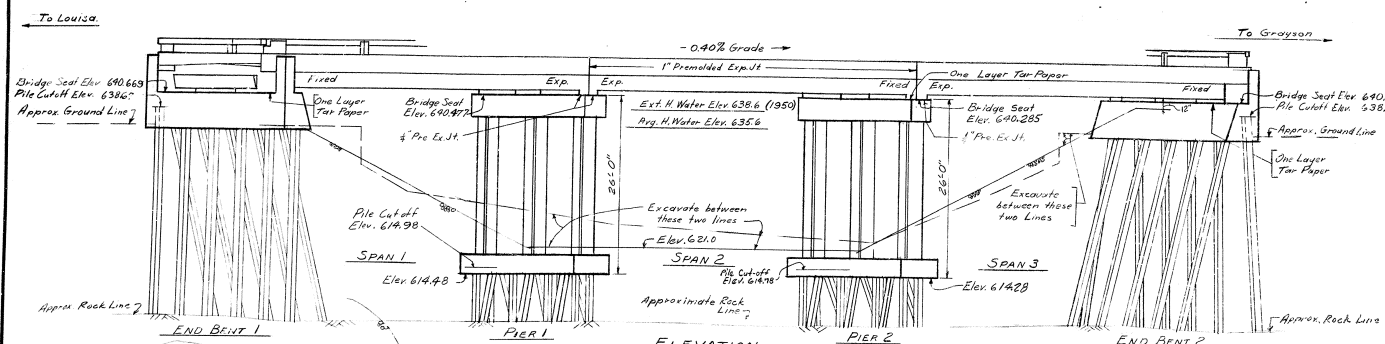


NO.	DATE	BY	REVISION
7	KY.		



**TOTAL ESTIMATE OF QUANTITIES**  
(SUPERSTRUCTURE REMOVED)  
(SHOWING PILES AND CUT-OFF ELEV.)

ITEM	SHEET NO.	CONCRETE CLASS (CAST IN PLACE)	REIN. LBS.	BRONZE PLATES LBS.	STEEL PILE COMPOUND CU YDS	DETOUR STRUCT.	CHANNEL CHANGE	FURNISHING LIN. FT.	DRIVING LIN. FT.	EXISTING STRUCTURE	SLOPE PROTECTION sq. Yds.	REMOVE EXISTING STRUCTURE
Layout	1											
End Bent 1	2	31.7	2794					520	520		510	
Pier 1	3	64.2	1635		120			382	382			
Pier 2	3	64.2	1635		110			322	322			
End Bent 2	2	31.7	2794		10			520	520		510	
45' R.C.D.G. - SPAN 1	6-526-B	87.8	22965	380								
45' R.C.D.G. - SPAN 2	6-526-B	86.1	21896	380								
43' R.C.D.G. - SPAN 3	6-526-B	87.8	22965	380								
HANDRAILS - SPANS 1&2&3	112		7.6	2610								
12" 20#3 STEEL PILE	P1											
PILE RECORD TABLE	2											
SLOPE PROTECTION	1											
ELEVATIONS	4											
SOUNDINGS	5											
COPPER STRIP E.A.J.H.M.T.	11											
BRONZE PLATES	6-526-B											
<b>TOTALS</b>		453.5	7.6	92294	1140	240	LUMP SUM	500 POUND LUMBER DECK STRINGERS AND I-BEAM	1684	1684	1020	LUMP SUM

**BILL OF INCIDENTAL MATERIAL**

ITEM	NO.	DESCRIPTION
Copper Strip	2	See sketch below & Std. Draw G-351
Floor Drains	18	G-526-B
Expansion Jt. Mat.	2	1' x 3' 11" x 29' 9" (Between Spans)
"	4	1' x 1' 11" x 1' 5" (Between Spans)
"	1	1/2' x 1' 1/2" x 30' 6 1/2" (Pier 2)
"	1	1/2' x 2' 1/2" x 31' 3" (Pier 1)
"	4	1/2' x 4' 8" x 1' 2' 9" (Wing End Bent 1&2)

**Note:** Quantities shown in Bill of Incidental Material are approximate only, and the Contractor is responsible for furnishing enough material to complete the work in accordance with the Specifications.

**GENERAL NOTE**

**SPECIFICATIONS:** Kentucky Department of Highways, 1956 Standard with Amendments.

**DESIGN LOAD:** Bridge designed for H<sub>20</sub>-44 Loading as specified in R.D.S. 110, 1957 Specifications.

**CONCRETE:** Class A Concrete to be used throughout except in handrails. Class D Concrete to be used in handrails.

**REINFORCEMENT:** Dimensions from the face of concrete to bars are clear distances except as otherwise shown. Dimensions for bar spacing are distances center to center of bars.

**TAR PAPER:** To be commercial grade Tar Paper or Roofing Felt, approximately 1/8" thick.

**BEVELED EDGES:** All exposed edges shall be beveled 1/8" unless otherwise noted.

**PLACING FILL:** The fill material shall be placed in front and back of End Bent 1, 2, in accordance with the Specifications. Fill at End Bent 1 to be at Elev. 635.67 before driving piles.

**PILING:** Piles to be driven to refusal or to sustain a minimum load of 8 tons. Test piles to determine length of piling required shall be driven at Locations shown on plans. Test piles shall be accurately located, so as to be used as bearing piles in the finished structure.

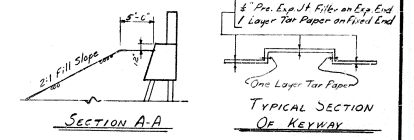
**FLOOR DRAINS, EXPANSION JOINT MATERIAL, COPPER STRIPS AND TAR PAPER:** The cost of these items to be included in the unit price bid for Class A Concrete.

**SLOPE PROTECTION:** Slope protection shall be cyclopean stone in accordance with Division 6, Section 3 of the Specifications.

**DETOUR BRIDGE:** The contractor shall erect, maintain and remove after use a temporary bridge of 12' minimum roadway, 100' long and capable of carrying a 12 ton truck. Elevation of bridge floor 636.0. The cost of erection, maintenance and removal of structure shall be included in the lump sum bid.

**REMOVE EXISTING STRUCTURE:** The existing I-beam and timber bridge to be removed in accordance with the specifications. The Steel Beams are to be carefully removed and stored at the direction of the Engineer, near the bridge site. The cost of this shall be included in the Lump Sum bid for removing existing structures.

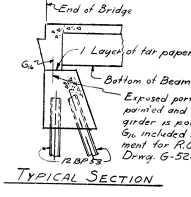
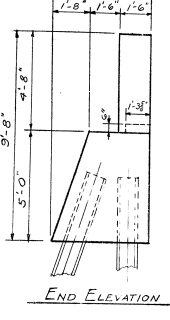
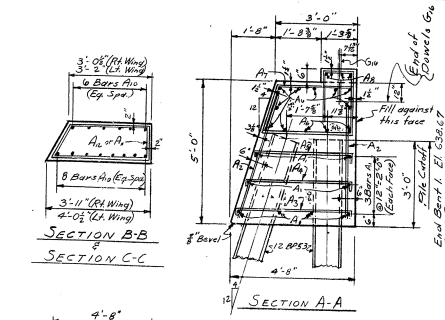
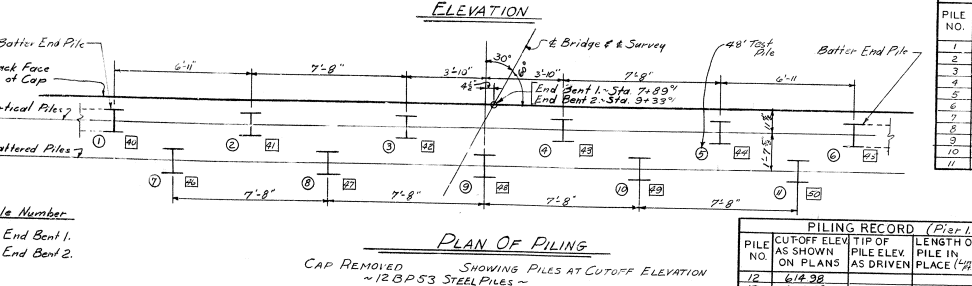
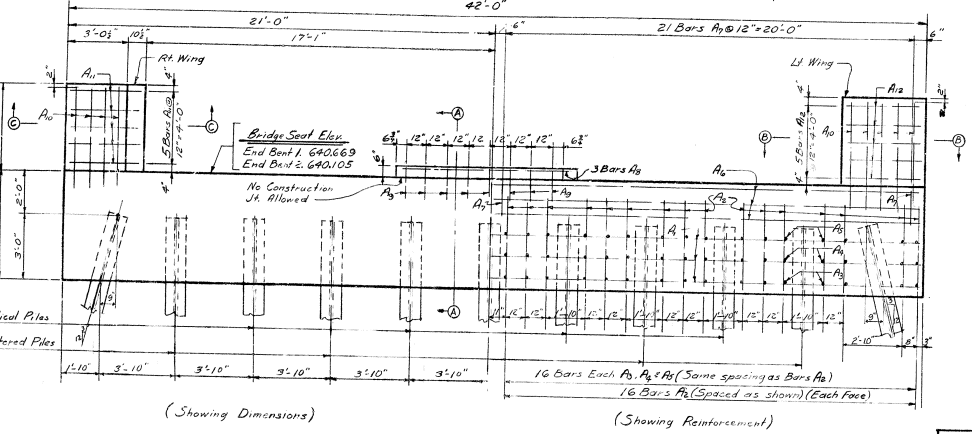
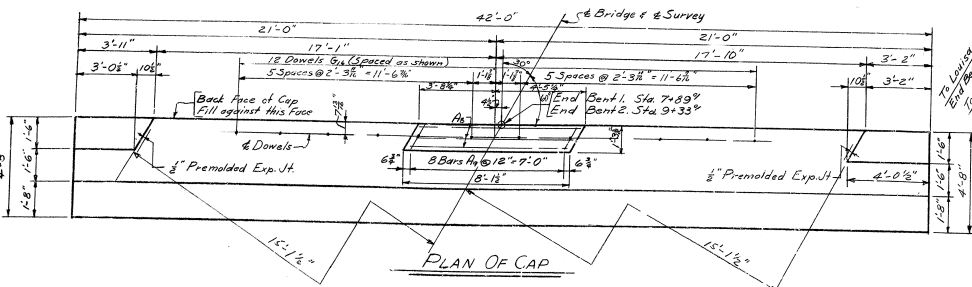
**CONSTRUCTION ORDER:** Build Piers 1&2 and backfill before driving piles for End Bent 1&2. 1' Pre-Exp. Jt. Fill on Exp. End U Layer Tar Paper on Fixed End.



Bridge over Dry Fork Creek Sheet of 5

**COMMONWEALTH OF KENTUCKY**  
DEPARTMENT OF HIGHWAYS  
FRANKFORT  
COUNTY OF  
**LAWRENCE-CARTER**  
GRAYSON-HITCHINS-LOUISA  
ROAD

STATION 3+61.7 PROJECT NO. 14061



ITEM	QTY	UNIT	LOCATION	AMOUNT
A-1	8	#4	Bent Cap - Top	27.14
A-2	6	#4	" "	21.42
A-3	10	#2	" "	37.84
A-4	32	#4	" "	128.00
A-5	32	#4	" "	128.00
A-6	12	#4	" "	47.52
A-7	3	#2	" "	12.00
A-8	8	#4	" "	31.68
A-9	3	#2	" "	12.00
A-10	8	#4	" "	31.68
A-11	5	#4	" "	18.75

Note: For details of 12BP53 Piles, see Std. Draw. R-17. No lagging required.

ESTIMATE OF QUANTITIES

Item	Description	Quantity
End Bent 1	Concrete, Class A	31.7 Cu Yds
	Reinforcement	2794 Lbs
	Furnishing Piles, 12BP53	520 Lin Ft
	Driving Piles, 12BP53	520 Lin Ft
End Bent 2	Concrete, Class A	31.7 Cu Yds
	Reinforcement	2794 Lbs
	Furnishing Piles, 12BP53	520 Lin Ft
	Driving Piles, 12BP53	520 Lin Ft

PILE NO.	CUTOFF ELEV. AS SHOWN ON PLANS	TIP OF PILE IN PLACE (%)	LENGTH OF PILE IN PLACE (%)	CALCULATED BEARING CAPACITY (TONS)
1	635.67			
2	635.67			
3	635.67			
4	635.67			
5	635.67			
6	635.67			
7	635.67			
8	635.67			
9	635.67			
10	635.67			
11	635.67			

PILE NO.	CUTOFF ELEV. AS SHOWN ON PLANS	TIP OF PILE IN PLACE (%)	LENGTH OF PILE IN PLACE (%)	CALCULATED BEARING CAPACITY (TONS)
12	614.98			
13	614.98			
14	614.98			
15	614.98			
16	614.98			
17	614.98			
18	614.98			
19	614.98			
20	614.98			
21	614.98			
22	614.98			
23	614.98			
24	614.98			
25	614.98			

PILE NO.	CUTOFF ELEV. AS SHOWN ON PLANS	TIP OF PILE IN PLACE (%)	LENGTH OF PILE IN PLACE (%)	CALCULATED BEARING CAPACITY (TONS)
26	614.98			
27	614.98			
28	614.98			
29	614.98			
30	614.98			
31	614.98			
32	614.98			
33	614.98			
34	614.98			
35	614.98			
36	614.98			
37	614.98			
38	614.98			
39	614.98			

PILE NO.	CUTOFF ELEV. AS SHOWN ON PLANS	TIP OF PILE IN PLACE (%)	LENGTH OF PILE IN PLACE (%)	CALCULATED BEARING CAPACITY (TONS)
40	635.10			
41	635.10			
42	635.10			
43	635.10			
44	635.10			
45	635.10			
46	635.10			
47	635.10			
48	635.10			
49	635.10			
50	635.10			

END BENTS 1 & 2

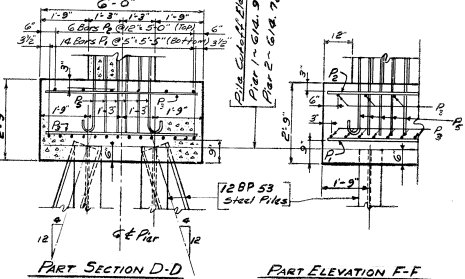
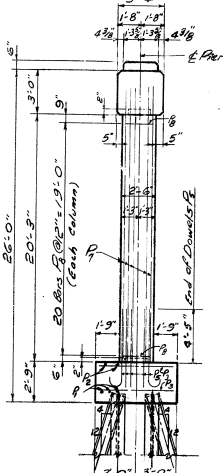
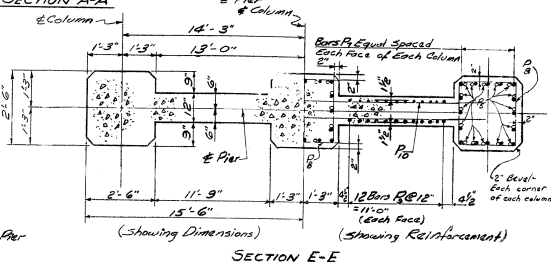
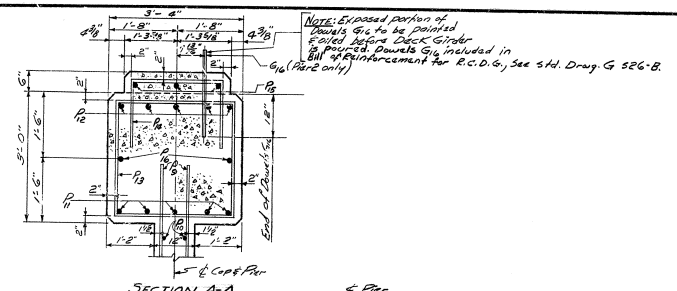
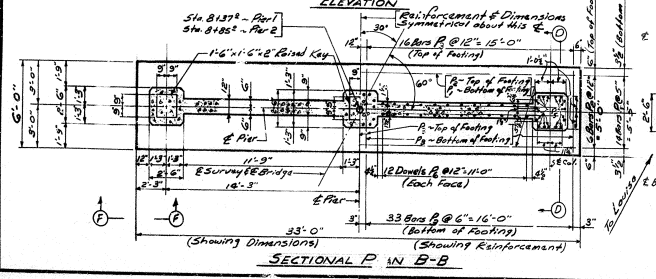
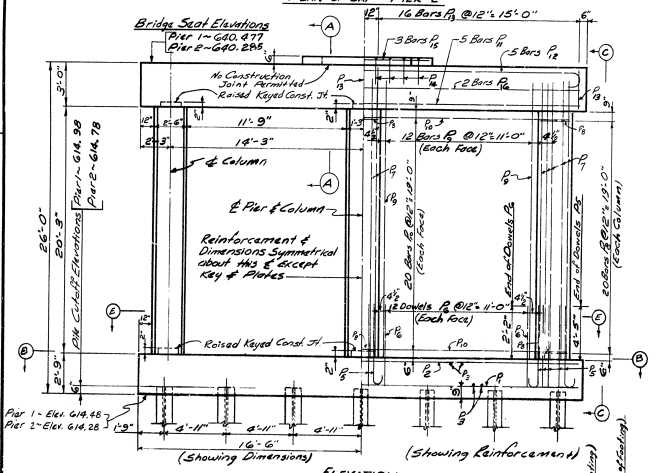
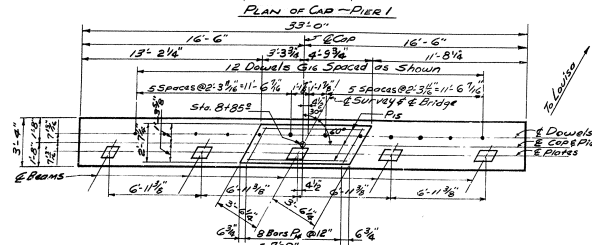
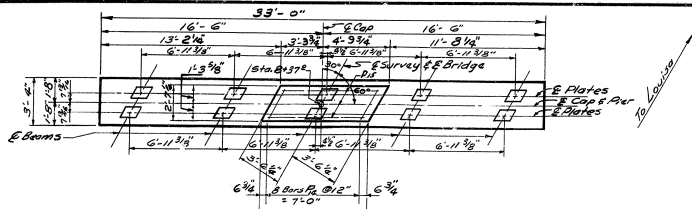
- File Number
- End Bent 1
  - End Bent 2

**PILING NOTE:**  
The data listed herein does not replace other records on piles required to be kept and submitted by the Resident Engineer. After all piles have been driven, the Resident Engineer shall record the tip of pile elevations as driven, length of pile in place, and calculated bearing capacity of each pile, and return one blueprint copy of this sheet with this information to the Director of Bridges, so that the record can be placed on the original plans. Length of pile in place shown herein is the actual length of the pile in the finished structure below cut-off elevation, and not necessarily the pay item.

Bridge over Dry Fork Creek Sheet 2

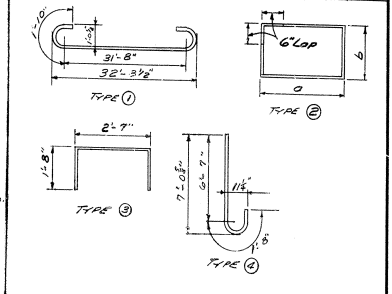
**COMMONWEALTH OF KENTUCKY**  
DEPARTMENT OF HIGHWAYS  
FRANKFORT  
COUNTY OF  
**LAWRENCE - CARTER**  
GRAYSON-HITCHINS-LOUISA  
ROAD

STATION 8+61 PROJECT NO. \_\_\_\_\_  
BRIDGE NUMBER 14061



**BILL OF REINFORCEMENT**

NO.	DESCRIPTION	QUANTITY	UNIT	REMARKS
1	FOOTING	322	LN. FT.	
2	FOOTING	322	LN. FT.	
3	FOOTING	322	LN. FT.	
4	FOOTING	322	LN. FT.	
5	FOOTING	322	LN. FT.	
6	FOOTING	322	LN. FT.	
7	FOOTING	322	LN. FT.	
8	FOOTING	322	LN. FT.	
9	FOOTING	322	LN. FT.	
10	FOOTING	322	LN. FT.	
11	FOOTING	322	LN. FT.	
12	FOOTING	322	LN. FT.	
13	FOOTING	322	LN. FT.	
14	FOOTING	322	LN. FT.	
15	FOOTING	322	LN. FT.	
16	FOOTING	322	LN. FT.	
17	FOOTING	322	LN. FT.	
18	FOOTING	322	LN. FT.	
19	FOOTING	322	LN. FT.	
20	FOOTING	322	LN. FT.	
21	FOOTING	322	LN. FT.	
22	FOOTING	322	LN. FT.	
23	FOOTING	322	LN. FT.	
24	FOOTING	322	LN. FT.	
25	FOOTING	322	LN. FT.	
26	FOOTING	322	LN. FT.	
27	FOOTING	322	LN. FT.	
28	FOOTING	322	LN. FT.	
29	FOOTING	322	LN. FT.	
30	FOOTING	322	LN. FT.	
31	FOOTING	322	LN. FT.	
32	FOOTING	322	LN. FT.	
33	FOOTING	322	LN. FT.	
34	FOOTING	322	LN. FT.	
35	FOOTING	322	LN. FT.	
36	FOOTING	322	LN. FT.	
37	FOOTING	322	LN. FT.	
38	FOOTING	322	LN. FT.	
39	FOOTING	322	LN. FT.	
40	FOOTING	322	LN. FT.	
41	FOOTING	322	LN. FT.	
42	FOOTING	322	LN. FT.	
43	FOOTING	322	LN. FT.	
44	FOOTING	322	LN. FT.	
45	FOOTING	322	LN. FT.	
46	FOOTING	322	LN. FT.	
47	FOOTING	322	LN. FT.	
48	FOOTING	322	LN. FT.	
49	FOOTING	322	LN. FT.	
50	FOOTING	322	LN. FT.	
51	FOOTING	322	LN. FT.	
52	FOOTING	322	LN. FT.	
53	FOOTING	322	LN. FT.	
54	FOOTING	322	LN. FT.	
55	FOOTING	322	LN. FT.	
56	FOOTING	322	LN. FT.	
57	FOOTING	322	LN. FT.	
58	FOOTING	322	LN. FT.	
59	FOOTING	322	LN. FT.	
60	FOOTING	322	LN. FT.	
61	FOOTING	322	LN. FT.	
62	FOOTING	322	LN. FT.	
63	FOOTING	322	LN. FT.	
64	FOOTING	322	LN. FT.	
65	FOOTING	322	LN. FT.	
66	FOOTING	322	LN. FT.	
67	FOOTING	322	LN. FT.	
68	FOOTING	322	LN. FT.	
69	FOOTING	322	LN. FT.	
70	FOOTING	322	LN. FT.	
71	FOOTING	322	LN. FT.	
72	FOOTING	322	LN. FT.	
73	FOOTING	322	LN. FT.	
74	FOOTING	322	LN. FT.	
75	FOOTING	322	LN. FT.	
76	FOOTING	322	LN. FT.	
77	FOOTING	322	LN. FT.	
78	FOOTING	322	LN. FT.	
79	FOOTING	322	LN. FT.	
80	FOOTING	322	LN. FT.	
81	FOOTING	322	LN. FT.	
82	FOOTING	322	LN. FT.	
83	FOOTING	322	LN. FT.	
84	FOOTING	322	LN. FT.	
85	FOOTING	322	LN. FT.	
86	FOOTING	322	LN. FT.	
87	FOOTING	322	LN. FT.	
88	FOOTING	322	LN. FT.	
89	FOOTING	322	LN. FT.	
90	FOOTING	322	LN. FT.	
91	FOOTING	322	LN. FT.	
92	FOOTING	322	LN. FT.	
93	FOOTING	322	LN. FT.	
94	FOOTING	322	LN. FT.	
95	FOOTING	322	LN. FT.	
96	FOOTING	322	LN. FT.	
97	FOOTING	322	LN. FT.	
98	FOOTING	322	LN. FT.	
99	FOOTING	322	LN. FT.	
100	FOOTING	322	LN. FT.	



**ESTIMATE OF QUANTITIES**

ITEM	QUANTITY	UNIT
CONCRETE, CLASS A	64.2	CU. YDS.
REINFORCEMENT	11635	LBS.
FURNISHING PILES, 12BP53	322	LN. FT.
DRIVING PILES, 12BP53	322	LN. FT.

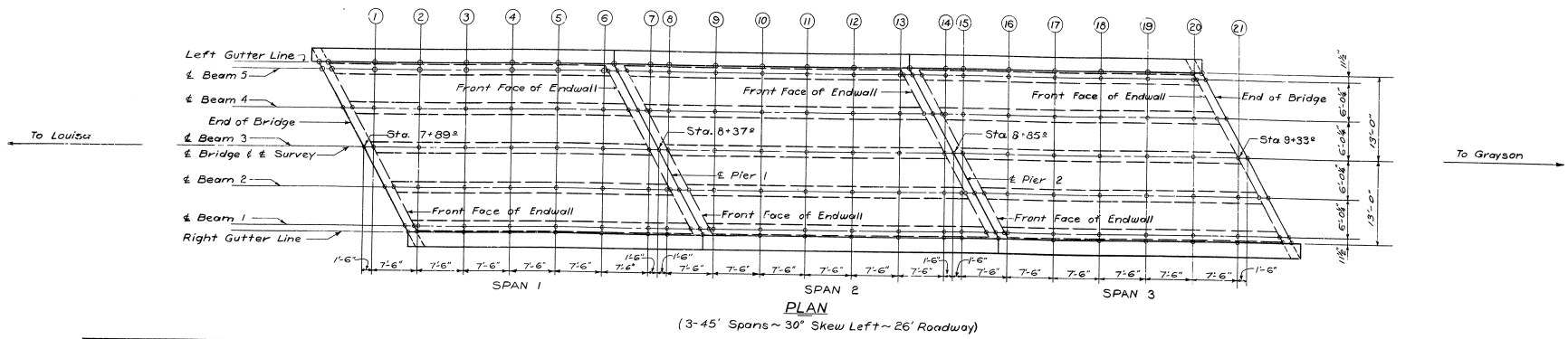
Bridge Over Dry Fork Creek Sheet 3

**COMMONWEALTH OF KENTUCKY**  
DEPARTMENT OF HIGHWAYS

FRANKFORT COUNTY OF  
**LAWRENCE-CARTER**  
GRAYSON - HITCHINS - LOUISA

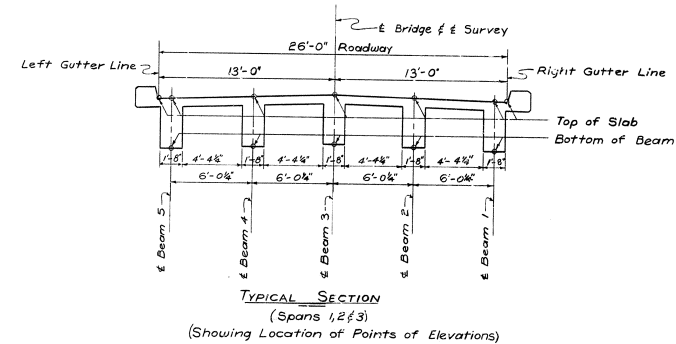
ROAD PROJECT NO. 84612 DRAWING NO. 14061

DRAWING NO. 14061  
 PROJECT NO. 84612  
 SHEET NO. 14061  
 DATE: \_\_\_\_\_  
 BY: \_\_\_\_\_  
 CHECKED BY: \_\_\_\_\_  
 APPROVED BY: \_\_\_\_\_



PLAN  
(3-45' Spans ~ 30° Skew Left ~ 26' Roadway)

LOCATION	ELEVATIONS													
	RIGHT GUTTER LINE	€ BEAM 1		€ BEAM 2		€ SURVEY, € BRIDGE & € BEAM 3		€ BEAM 4		€ BEAM 5		LEFT GUTTER LINE		
		TOP OF SLAB	BOTTOM OF BEAM	TOP OF SLAB	BOTTOM OF BEAM	TOP OF SLAB	BOTTOM OF BEAM	TOP OF SLAB	BOTTOM OF BEAM	TOP OF SLAB	BOTTOM OF BEAM			
END OF BRIDGE	644.589	644.609	644.703	644.738	644.738	644.731	644.731	644.725	641.300	644.659	641.224	644.649		
FRONT FACE OF ENDWALL	644.583	644.603	641.169	644.697	641.273	644.738	641.321	644.725	641.300	644.659	641.224	644.643		
1	---	---	---	---	---	644.738	641.321	644.718	641.293	644.643	641.209	644.626		
2	---	644.602	641.167	644.689	641.264	644.721	641.304	644.698	641.274	644.621	641.187	644.604		
3	644.566	644.585	641.150	644.669	641.244	644.699	641.282	644.674	641.249	644.594	641.160	644.574		
4	644.544	644.562	641.128	644.644	641.219	644.671	641.254	644.644	641.219	644.562	641.128	644.544		
5	644.516	644.534	641.100	644.614	641.189	644.639	641.222	644.609	641.184	644.525	641.090	644.506		
6	644.484	644.501	641.057	644.578	641.154	644.601	641.184	644.569	641.144	644.482	641.047	---		
7	644.446	644.463	641.029	644.538	641.113	644.558	641.141	---	---	---	---	---		
8	644.429	644.446	641.012	644.520	641.096	---	---	---	---	---	---	---		
FRONT FACE OF ENDWALL	644.397	644.417	640.989	644.511	641.093	644.552	641.141	---	641.120	641.044	---	644.457		
€ PIER 1	644.397	644.417	---	644.511	---	644.552	---	644.539	644.473	---	---	644.457		
FRONT FACE OF ENDWALL	---	---	640.977	---	641.081	641.129	---	641.108	---	641.032	---	---		
7	---	---	---	---	---	641.129	---	641.108	---	641.032	---	---		
8	---	---	---	---	---	644.546	641.129	644.526	641.101	644.451	641.017	644.434		
9	---	644.410	640.975	644.497	641.072	644.529	641.112	644.506	641.082	644.429	640.995	644.412		
10	644.374	644.393	640.958	644.477	641.052	644.507	641.090	644.482	641.057	644.402	640.968	644.384		
11	644.352	644.370	640.936	644.452	641.027	644.479	641.062	644.452	641.027	644.370	640.936	644.352		
12	644.324	644.342	640.908	644.422	640.997	644.447	641.030	644.417	640.992	644.333	640.899	644.314		
13	644.292	644.309	640.875	644.386	640.962	644.409	640.992	644.371	640.952	644.290	640.855	---		
14	644.254	644.271	640.857	644.346	640.921	644.366	640.949	---	---	---	---	---		
15	644.237	644.254	640.820	644.328	640.904	---	---	---	---	---	---	---		
FRONT FACE OF ENDWALL	644.205	644.225	640.797	644.328	640.904	644.300	641.001	640.949	640.928	644.251	640.852	644.265		
€ PIER 2	644.205	644.225	---	644.319	---	644.360	---	644.347	---	644.281	---	644.265		
FRONT FACE OF ENDWALL	---	---	640.785	---	640.889	---	640.937	---	640.916	---	640.840	---		
14	---	---	---	---	---	644.354	640.937	644.334	640.909	644.258	640.825	644.249		
15	---	---	---	---	---	644.354	640.937	644.334	640.909	644.258	640.825	644.242		
16	---	644.218	640.783	644.305	640.880	644.337	640.920	644.314	640.890	644.237	640.803	644.220		
17	644.182	644.201	641.766	644.285	640.860	644.315	640.898	644.290	640.865	644.210	640.776	644.192		
18	644.160	644.178	640.744	644.260	640.835	644.287	640.870	644.260	640.835	644.178	640.744	644.160		
19	644.132	644.150	640.716	644.230	640.805	644.255	640.838	644.225	640.800	644.141	640.706	644.122		
20	644.100	644.117	640.683	644.194	640.770	644.217	640.800	644.185	640.760	644.098	640.663	---		
21	644.062	644.079	640.645	644.154	640.729	644.174	640.757	---	---	---	---	---		
FRONT FACE OF ENDWALL	644.019	644.039	640.605	644.133	640.709	644.174	640.757	644.161	640.736	644.095	640.660	644.079		
END OF BRIDGE	644.013	644.033	---	644.127	---	644.168	---	644.153	---	644.089	---	644.073		



NOTE:  
All elevations shown on this sheet include construction camber and are to be maintained with falsework in place.

ELEVATIONS

Bridge over Dry Fork Creek Sheet 4

**COMMONWEALTH OF KENTUCKY**  
DEPARTMENT OF HIGHWAYS  
FRANKFORT  
COUNTY OF  
**LAWRENCE - CARTER**  
GRAYSON - HITCHINS - LOUISA

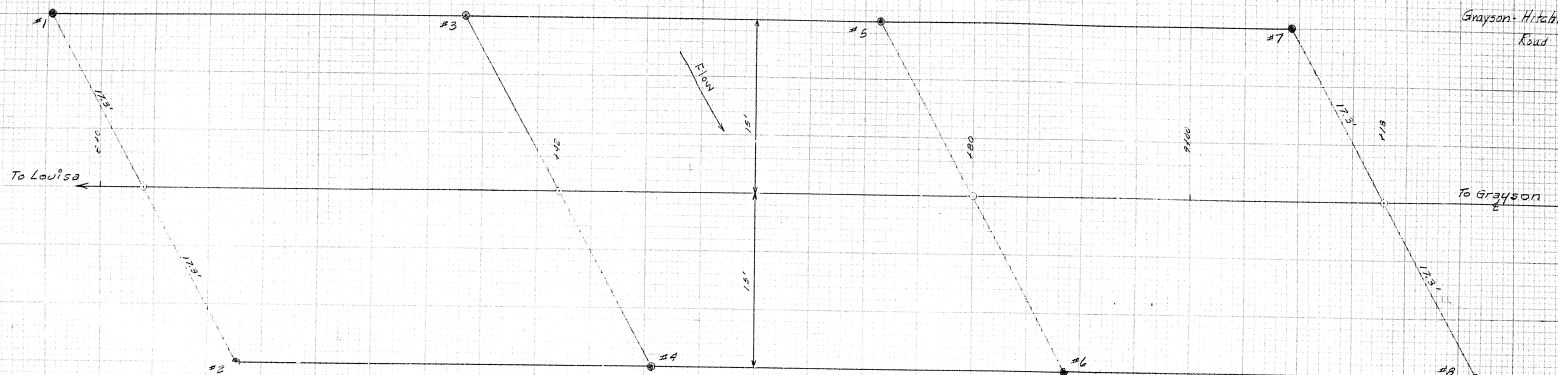
ROAD  
STATION 8+61.2 PROJECT NO.  
BRIDGE NUMBER DRAWN BY 14061

DESIGNED BY L.C. SCHWAB, CHECKED BY B.E. KEMP, DATE 10/25/52  
 DRAWN BY L.C. SCHWAB, CHECKED BY R.E. KEMP, DATE 10/25/52  
 PROJECT NO. 14061, SHEET NO. 4

Sta. 8+61 Const  
3-45' R.C.D.G. Spans  
@ 30° Skew Lt.

Scale 1" = 5'

Lawrence County  
SP-64-73-23  
Grayson-Hitchins-Louisa  
Road



Hole #1  
173 Lt Sta. 8+09

Hole #2  
173 Rt Sta. 8+01

Hole #3  
173 Lt Sta. 8+42

Hole #4  
173 Rt Sta. 8+42

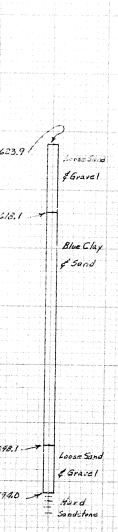
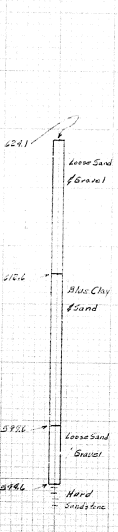
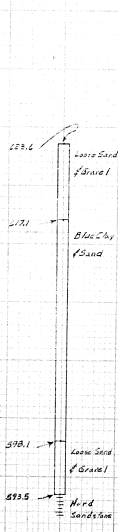
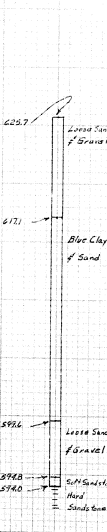
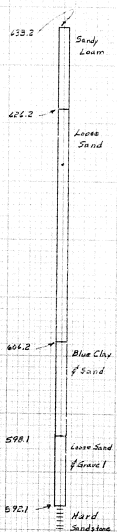
Hole #5  
173 Lt Sta. 8+80

Hole #6  
173 Rt Sta. 8+80

Hole #7  
173 Lt Sta. 9+18

Hole #8  
173 Rt Sta. 9+18

635  
630  
625  
620  
615  
610  
605  
600  
595  
590  
585



Sheet 5 of 8  
COMMONWEALTH OF KENTUCKY  
DEPARTMENT OF HIGHWAYS  
FRANKFORT  
COUNTY OF  
**LAWRENCE AND CARTER**  
GRAYSON-HITCHINS-LOUISA  
ROAD  
STATION 8+61 PROJECT NO. 1061  
FOR BIDD NUMBER 1061

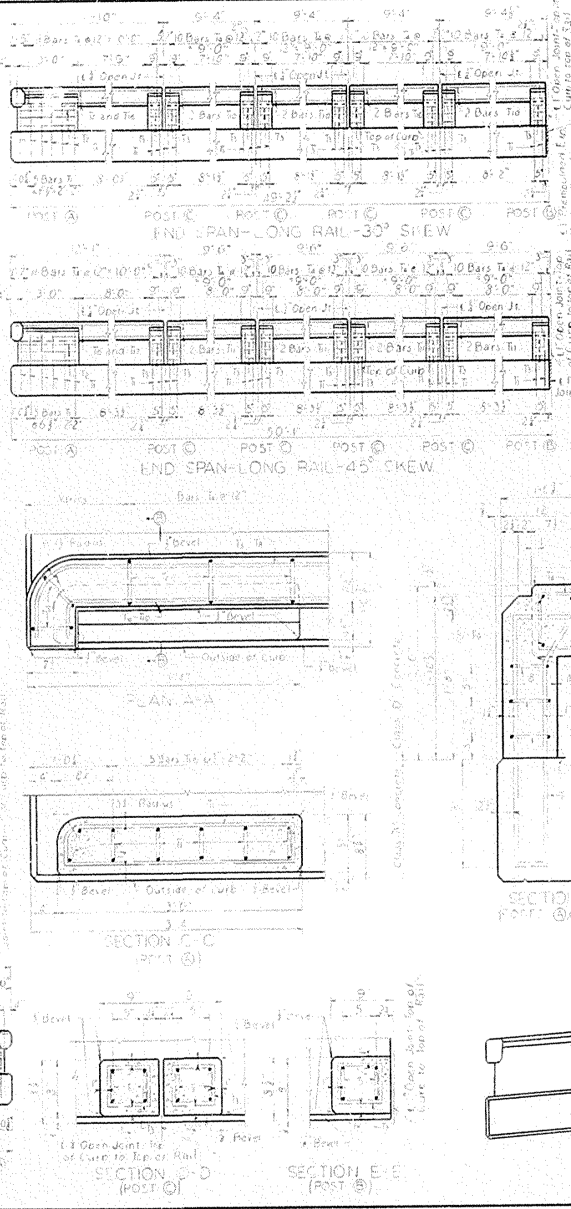
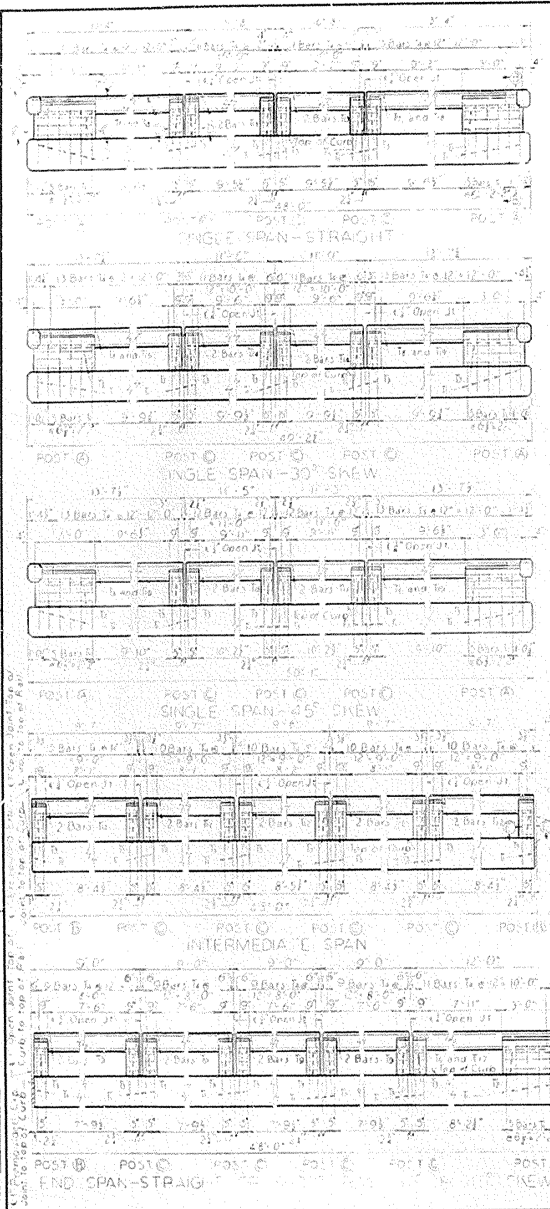


TABLE OF REINFORCEMENT AND ESTIMATE OF QUANTITIES

SPAN TYPE	RAILS	SPAN	NUMBER										CONCRETE CLASS 'D' CUBIC YDS.	REINFORCEMENT LBS.		
			1	2	3	4	5	6	7	8	9	10				
SINGLE	TWO RAILS	45'	2	36	0	0	0	0	0	0	0	0	0	0	2.7	897
	TWO RAILS	40'	6	0	0	0	0	0	0	0	0	0	0	0	2.4	820
INTERMEDIATE	TWO RAILS	40'	6	0	0	0	0	0	0	0	0	0	0	2.4	820	
	TWO RAILS	45'	2	36	0	0	0	0	0	0	0	0	0	2.7	897	
SINGLE	TWO RAILS	45'	2	36	0	0	0	0	0	0	0	0	0	2.7	897	
	TWO RAILS	40'	6	0	0	0	0	0	0	0	0	0	0	2.4	820	
INTERMEDIATE	TWO RAILS	40'	6	0	0	0	0	0	0	0	0	0	0	2.4	820	
	TWO RAILS	45'	2	36	0	0	0	0	0	0	0	0	0	2.7	897	
SINGLE	TWO RAILS	45'	2	36	0	0	0	0	0	0	0	0	0	2.7	897	
	TWO RAILS	40'	6	0	0	0	0	0	0	0	0	0	0	2.4	820	
INTERMEDIATE	TWO RAILS	40'	6	0	0	0	0	0	0	0	0	0	0	2.4	820	
	TWO RAILS	45'	2	36	0	0	0	0	0	0	0	0	0	2.7	897	
SINGLE	TWO RAILS	45'	2	36	0	0	0	0	0	0	0	0	0	2.7	897	
	TWO RAILS	40'	6	0	0	0	0	0	0	0	0	0	0	2.4	820	
INTERMEDIATE	TWO RAILS	40'	6	0	0	0	0	0	0	0	0	0	0	2.4	820	
	TWO RAILS	45'	2	36	0	0	0	0	0	0	0	0	0	2.7	897	
SINGLE	TWO RAILS	45'	2	36	0	0	0	0	0	0	0	0	0	2.7	897	
	TWO RAILS	40'	6	0	0	0	0	0	0	0	0	0	0	2.4	820	
INTERMEDIATE	TWO RAILS	40'	6	0	0	0	0	0	0	0	0	0	0	2.4	820	
	TWO RAILS	45'	2	36	0	0	0	0	0	0	0	0	0	2.7	897	

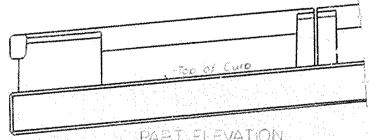
BILL AND TYPES OF REINFORCEMENT

NO.	TYPE	SIZE	LENGTH	LOCATION	QTY	WGT	WGT	WGT
			FT. IN.			LB.	TONS	TONS
1	Bar	No. 10	7 0	Curb into Posts	11	0	11	0
2	Bar	No. 11	7 0	Posts (A)	0	0	0	0
3	Bar	No. 11	2 0	Posts (B) and (C)	0	0	0	0
4	Bar	No. 12	5 0	Bar	11	0	11	0
5	Bar	No. 12	1 1	"	11	0	11	0
6	Bar	No. 12	3 0	"	11	0	11	0
7	Bar	No. 12	7 0	"	12	6	13	0
8	Bar	No. 12	11 0	"	12	10	13	0
9	Bar	No. 12	8 0	"	11	0	11	0
10	Bar	No. 12	9 0	"	11	0	11	0
11	Bar	No. 12	9 3	"	11	0	11	0
12	Bar	No. 12	10 0	"	11	0	11	0
13	Bar	No. 12	10 8	"	11	0	11	0
14	Bar	No. 12	11 1	"	11	0	11	0
15	Bar	No. 12	11 2	"	11	0	11	0
16	Bar	No. 12	11 9	"	11	0	11	0
17	Bar	No. 12	13 1	"	12	6	13	0
18	Bar	No. 12	13 2	"	12	6	13	0
19	Bar	No. 12	13 2	"	12	6	13	0



GENERAL NOTE

SPECIFICATIONS: Kentucky Department of Highways Current Specifications with Amendments  
 CONCRETE: Class 'D' concrete to be used in handrail  
 REINFORCEMENT: Dimensions from face of concrete to bars are clear distances except as otherwise shown. Distances for bar spacing are distances center to center of bars. The deformations of all reinforcing steels shall conform to A. S. T. M. Designation A305 - current specifications.  
 BEVELED EDGES: All exposed edges to be beveled 1/4" unless otherwise noted.



PART ELEVATION

When bridge is on a plus or minus grade the top of all posts and rail shall be parallel to the grade line. Sides of all posts shall be vertical.

**COMMONWEALTH OF KENTUCKY**  
 DEPARTMENT OF HIGHWAYS  
 FRANKFORT

STANDARD HANDRAIL  
 DECK GIRDER 45 FT SPAN  
 ALL ROADWAY WIDTHS

DESIGNED BY: \_\_\_\_\_ BRIDGE ENGINEER  
 STATE HIGHWAY \_\_\_\_\_

CHECKED BY: \_\_\_\_\_



STA. FROM	STA. TO	POST NO.	PLAN	SHEET	TOTAL
7					

**GENERAL NOTE**

**CONSTRUCTION NOTE:** This drawing to be used in conjunction with Standard Plans or Special Plans for concrete floors on bridges when so noted on the Standard or Special Plans.

The joint between the spans shall have the copper strip and premolded joint filler so placed as to prevent contact of concrete between spans and to provide the full width of joint shown on plans. The copper strip and premolded joint filler shall be accurately placed and rigidly held in correct position. The premolded filler on the roadway between curbs shall be trimmed or placed 1/2" below the concrete surface and sealed with asphaltic joint filler, as indicated on this Drawing.

No direct payment will be made for material or installation of copper expansion strip and premolded expansion joint filler, the cost of these shall be included in the unit price bid for class A concrete.

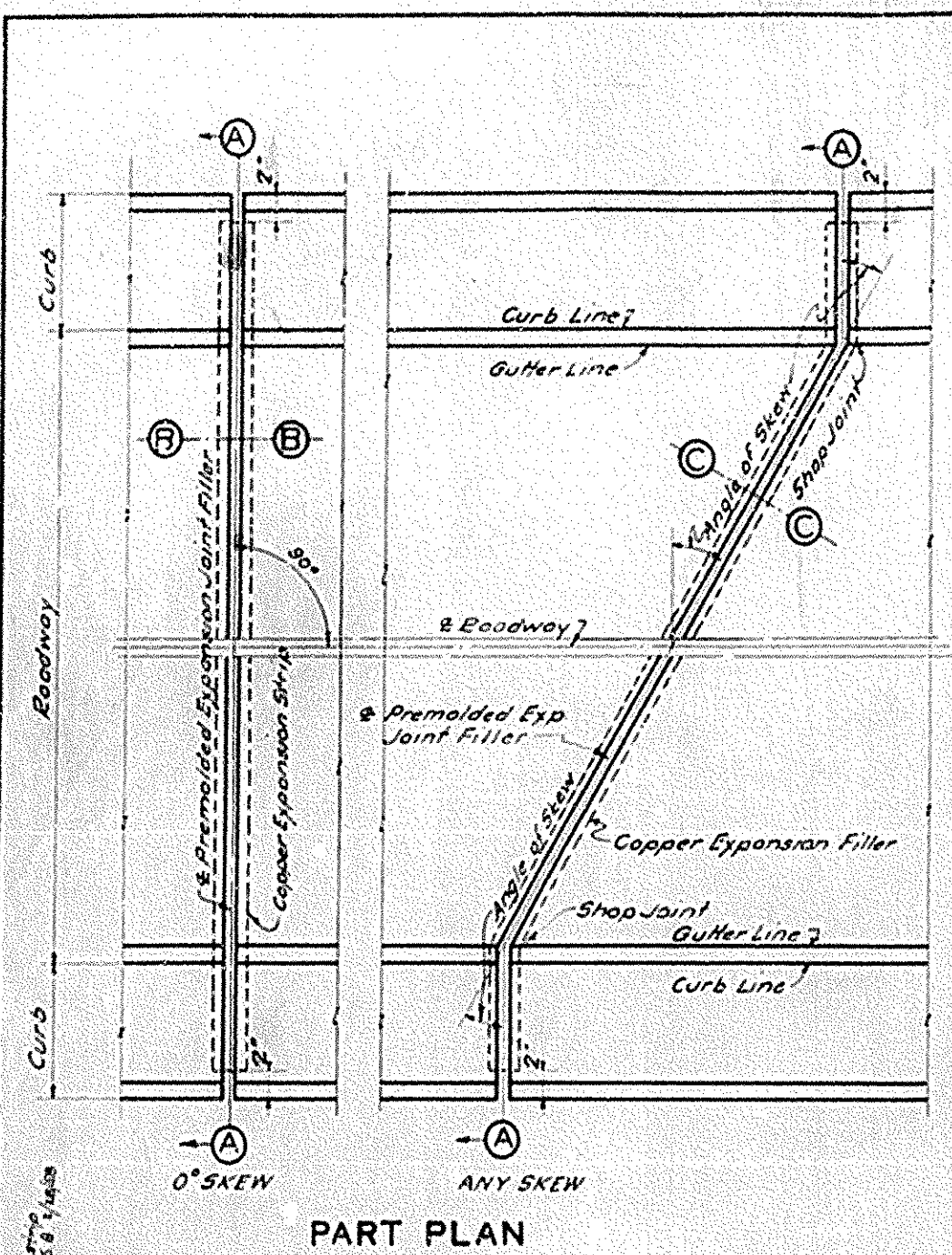
**SPECIFICATIONS FOR PREMOLDED FILLER:**

Premolded expansion joint filler shall conform to Section 7.25 of the 1956 Std. Specifications.

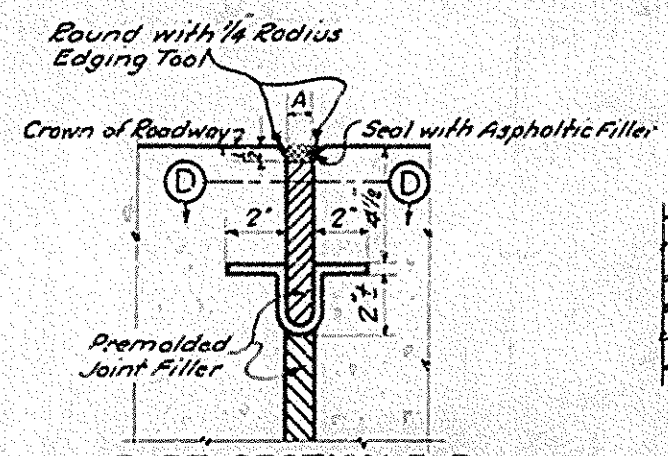
**SPECIFICATIONS FOR ASPHALTIC FILLER:** The Asphaltic Filler shall conform to the requirements of Section 7.26.2 of the Kentucky Department of Highways 1956 Standard Specifications, with Amendments.

**SPECIFICATION FOR COPPER EXPANSION STRIP:** The copper strips are to be 24 ounces soft sheet commercial grade A. Tolerance of 5% variation in weight above or below that specified will be allowed. The strips are to be shop fabricated to the section and dimensions shown. Field bending and fabrication will not be permitted except as provided hereon. Unless otherwise provided by plans, the strips may be furnished in one or two pieces. If furnished in two pieces the field joint shall be at the center line of roadway. Shop joints shall not be spaced closer than 6 feet unless otherwise shown on plans and shall be lock seam and soldered. The field joint at the center line of roadway may be a 2 inch width lap joint soldered. All joints shall be water tight.

On Skewed Spans the two copper strips are separate units and are not to be connected in any way that will prevent movement of the strips relative to each other. All points are to be located to allow free movement of the individual strips.

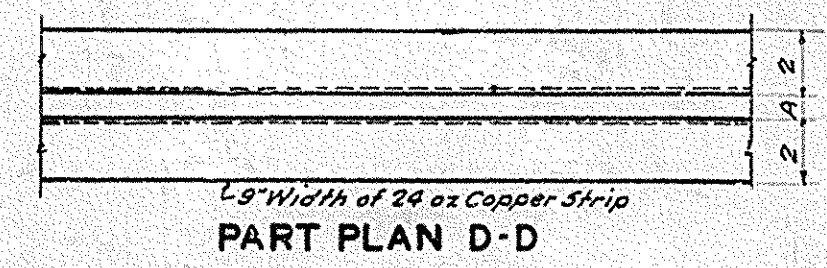


**PART PLAN**

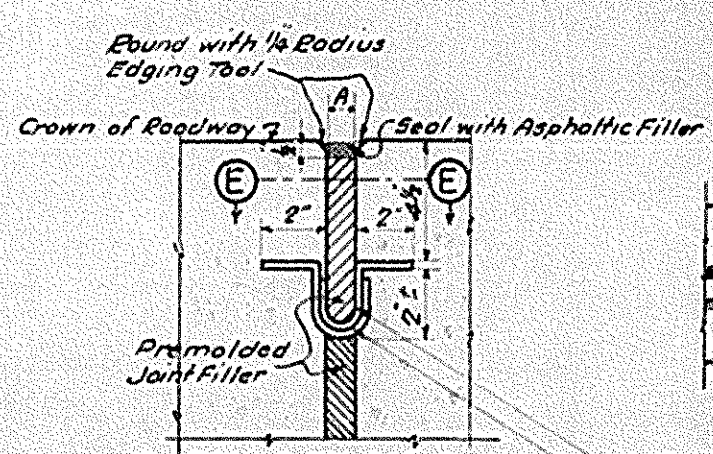


**PART SECTION B-B**  
Dimension A shown on Drawings (On Straight Spans)

NOTE: Dimension A is inside dimension and is to be same as thickness shown on Drawings for Premolded Expansion Joint Filler.

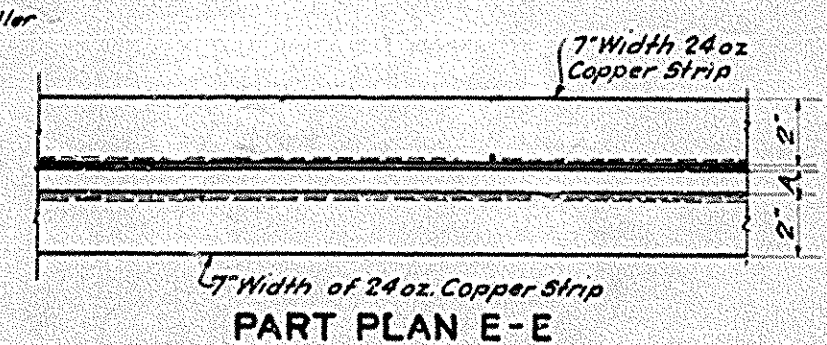


**PART PLAN D-D**  
9" Width of 24 oz Copper Strip



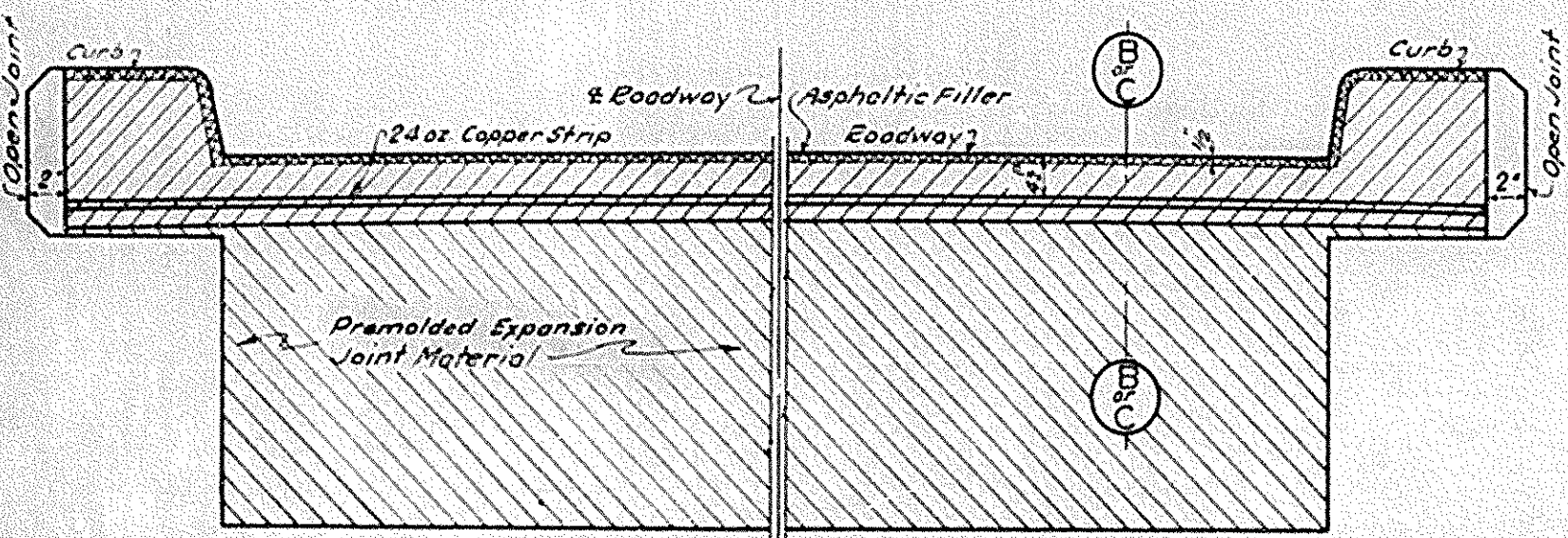
**PART SECTION C-C**  
Dimension A shown on Drawings (On all skewed Spans)

One point coat of Asphalt Cement PAC-7  
NOTE: Lower section of copper strip is placed first, just prior to placing upper section of copper strip paint lower section with PAC-7 along all areas of contact, to provide additional seal. Cost of this work shall be included in the unit price bid for Class A Concrete.



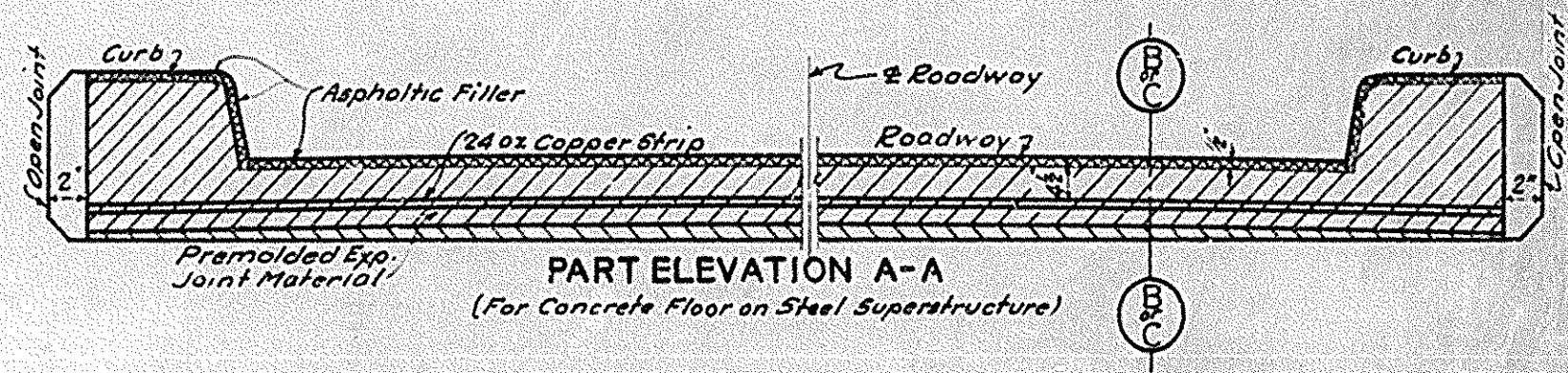
**PART PLAN E-E**  
7" Width of 24 oz. Copper Strip

Revised and Retrace  
 Approved by  
 Checked by  
 Date  
 Drawn by  
 Checked by  
 Date  
 Special: Prem. Exp. & Asphalt Filler. Add Cement paint to copper strip. 5.8.54  
 5.8.54  
 5.8.54



**PART ELEVATION A-A**  
(For Concrete Deck Girder Span)

NOTE: Premolded Expansion Joint Material of the thickness shown on plans to be used in joint over area shown as shaded above. Joint to be left open over unshaded areas.



**PART ELEVATION A-A**  
(For Concrete Floor on Steel Superstructure)

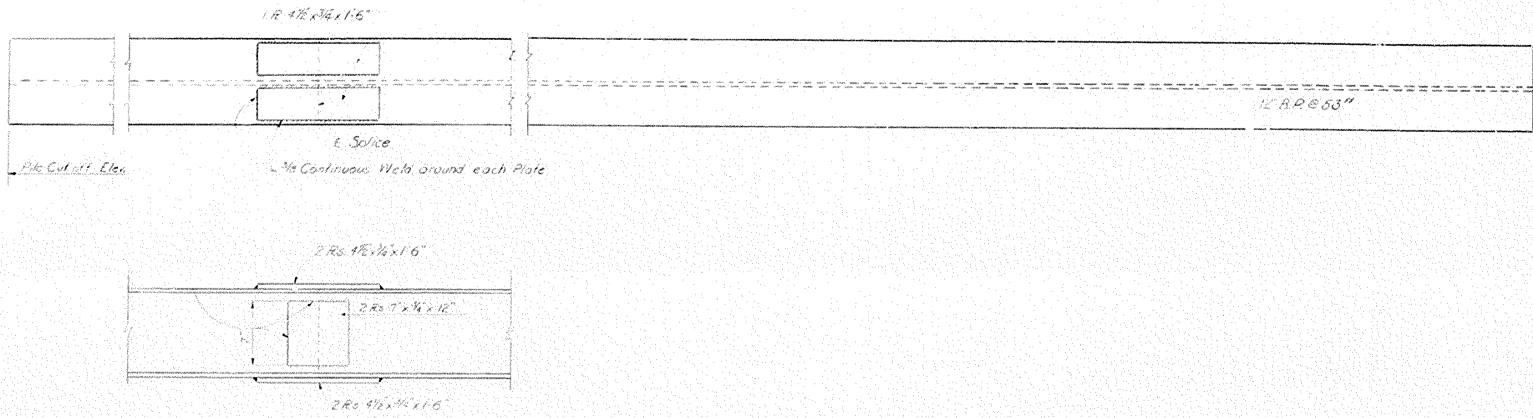
**TYPICAL EXPANSION JOINT DETAILS**

**COMMONWEALTH OF KENTUCKY**  
DEPARTMENT OF HIGHWAYS  
**EXPANSION JOINT DETAILS**  
FOR  
**CONCRETE BRIDGE FLOORS**

REVISED  
-G-351

**BRIDGE**

NO.	STATE	NO.	YEAR	NO.	NO.
7	KY.				



GENERAL NOTES

- SPECIFICATIONS: FURNISHING AND DRIVING PILES SHALL BE IN ACCORDANCE WITH KENTUCKY DEPARTMENT OF HIGHWAYS CURRENT SPECIFICATIONS WITH AMENDMENTS.
- MATERIALS: STRUCTURAL STEEL PILES AND SPICE PLATES SHALL CONFORM TO THE REQUIREMENTS OF ASTM-A36 DESIGNATION, CURRENT ASTM SPECIFICATIONS.
- FIELD WELDING: FIELD WELDING MATERIAL AND WORKMANSHIP FOR ALL PILING SHALL CONFORM TO THE REQUIREMENTS OF KENTUCKY DEPARTMENT OF HIGHWAYS CURRENT SPECIFICATIONS WITH AMENDMENTS.
- PAYMENT: THE CONTRACTOR SHALL BID ON FURNISHING AND DRIVING THE PILES IN ACCORDANCE WITH PLANS AND SPECIFICATIONS. THE UNIT PRICE BID PER LINEAR FOOT FOR FURNISHING AND DRIVING PILING SHALL INCLUDE THE COST OF SPlicing, WELDING, THE REQUISITE EQUIPMENT, TOOLS, LABOR AND ALL INCIDENTALS NECESSARY TO PERFORM THE WORK IN ACCORDANCE WITH PLANS AND SPECIFICATIONS.
- PAINT: NO PAINT SHALL BE REQUIRED ON STEEL PILES.
- REPORTS: THREE COPIES OF MILL ORDERS, MILL SHAPPING STATEMENTS AND CERTIFIED MILL TEST REPORTS FOR ALL STEEL TO BE USED SHALL BE FURNISHED THE DEPARTMENT OF HIGHWAYS.
- PILE LENGTH & SPLICES: STEEL PILES SHALL BE ORDERED FULL LENGTH AS SHOWN ON PLANS OR ORDERED FULL LENGTH AS SHOWN ON THE ORDER LIST FURNISHED BY THE ENGINEER. PILES SHALL BE SPLICED AS INDICATED ON PLANS ONLY WHEN DRIVEN BELOW CUTOFF ELEVATION.

APPROVED BY: [Signature] DATE: [Blank]

CHECKED BY: [Signature] DATE: [Blank]

DESIGNED BY: [Signature] DATE: [Blank]

DRAWN BY: [Signature] DATE: [Blank]

COMMONWEALTH OF KENTUCKY  
 DEPARTMENT OF HIGHWAYS  
 FRANKFORT  
 STANDARD 12"  
 STRUCTURAL STEEL  
 BEARING PILE AT 53LBS.

WITHOUT CAP PLATE

BRIDGE NUMBER [Blank] DRAWING NO. P 17 SHEET [Blank]

